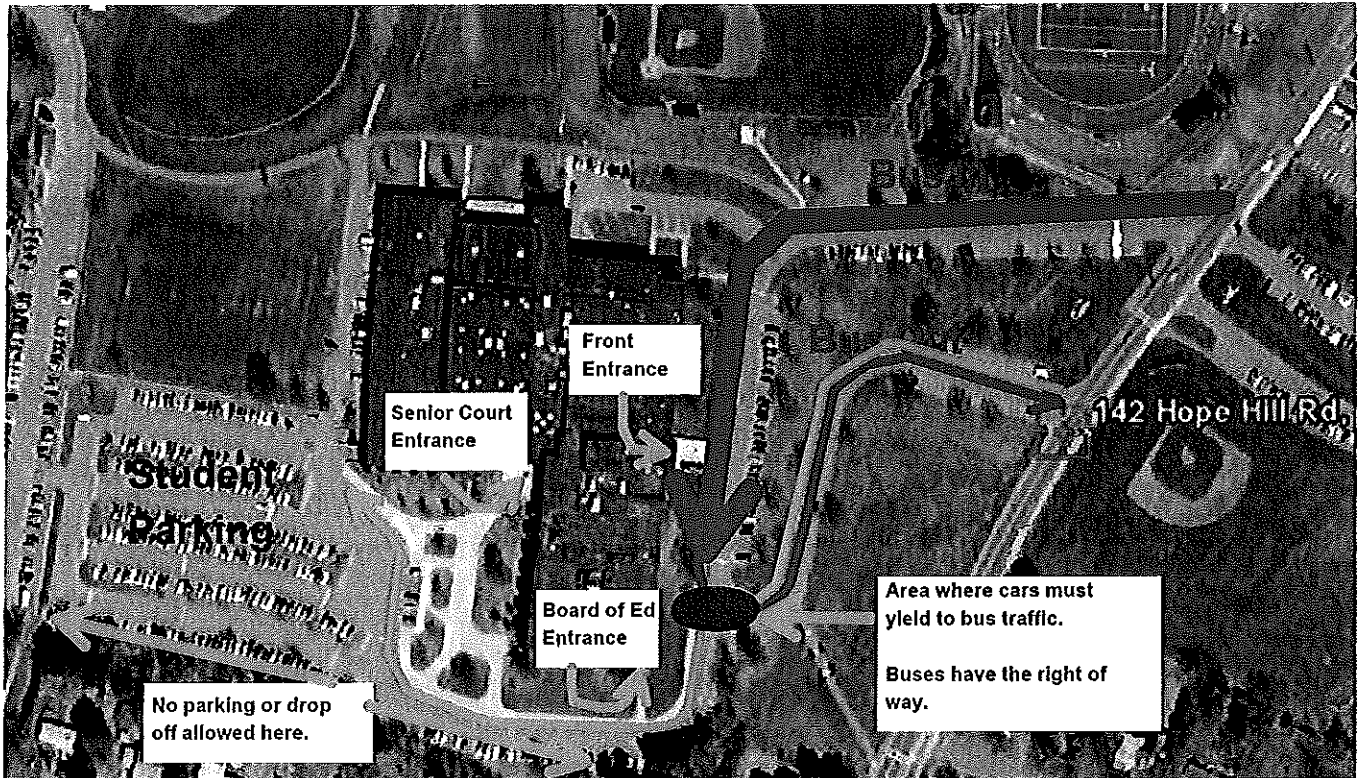


Mark T. Sheehan High School



Bus Transportation To and From School

Buses load and unload students in the front driveway of the school. The only exception is some special needs transportation which load and unload students at the curb near senior court.

The late bus, which begins September 13, 2010, picks students up at the front entrance of the school (near the flag pole).

Private Vehicles

Student passengers in private vehicles are to be dropped off at the curb in the front or rear of the building, not on the side near the Board of Education parking.

At dismissal student passengers are to be picked up in the rear parking lot near senior court. At all other times, students may be picked up at either the front entrance or senior court entrance.

An Important Notice to All Drivers Who Exit Campus Via Hope Hill Road:

At dismissal, buses will be given right of way to exit campus before other traffic. All vehicles leaving the south side and rear parking lots will need to wait for the buses to depart before continuing down the front driveway to Hope Hill Road.